



THE PRESIDENCY  
REPUBLIC OF SOUTH AFRICA

## ISAZISO SESAHLUKO SE-14

NgokweSahluko se-14 soMthetho Wokukhuthaza Ukufinyeleleka  
Kolwazi wonyaka wonyaka we-2000  
(uMthetho wesi-2 wonyaka we-2000).

## I. ULWAZI NGOKULAWULWA KOMBHALO

### I.1. UKULAWULWA KOHLOBO LOMBHALO

Igama Lombhalo	IManuwali ngokoMthetho Wokukhuthaza Ukufinyeleleka Kolwazi wonyaka we-2000 (uMthetho wesi-2 wonyaka we-2000)
Inombolo Yombhalo	PAI-1400
Uhlobo Lombhalo	3.0
Isimo	Yamukelwe
Usuku Lombhalo	Febhuwari 2021
Umjikelezo Wokubukezwa	Njalo ngonyaka wesithathu
Ingena esikhundleni	2.0
Usuku lokubuyezwa okulandelayo	1 Novemba 2023
Umnikazi Wombhalo	UMqondisi-Jikelele
Ukwamukela Kwesiphathimandla	Isikhulu Esiphethe Imisebenzi
Umgcinimbhalo	Umqondisi Omkhulu (i-CD): IHhovisi Lesikhulu Esiphethe Imisebenzi
Usuku lokuqalala ukusebenza kokwamukelwa	Ngokushesha ekwamukeleni
Ukufingqwa Kancane	Le manuwali ingumbhalo womphakathi oqukethe, phakathi kokunye, imininingwane ephathelene nemisebenzi, ukuthiungaluthola kanjani ulwazi kanye ne-indekhsi yolwazi kanye namarekhodi agcinwe yiHhovisi likaMongameli.

### I.2. UMLANDO WOKUBUYEKEZWA

Ukubuyezwa	Iqalwe/Ibuyezwe u	Iyunithi	Ukuchazwa Kokushintsho	Usuku
1.0	U-CD: IHhovisi lika-COO	IHhovisi lika-COO	Ukukhishwa Kokuqala	21 Julayi 2015
2.0	U-CD: IHhovisi lika-COO	IHhovisi lika-COO	Ukukhishwa Kwesibili	12 Septhema 2017
3.0	U-CD: IHhovisi lika-COO	IHhovisi lika-COO	Ukukhishwa Kwesithathu	

### I.3. YAMUKELWE NGU-

Ama-inishali Nesibongo	isikhundla	Usuku
UMnu Thulani Mdakane	Ibamba Lesikhulu Esiphethe Imisebenzi	

## ITHEBULA LOKUQUKETHWE

- 1. ISANDULELO NGUMQONDISI-JIKELELE**
- 2. UKUGUNYAZWA NGUMTHETHOSISEKELO KWEHHOVISI LIKAMONGAMELI**
- 3. UKWAKHEKA KWEHHOVISI LIKAMONGAMELI**
  - 3.1 Isendlalo
  - 3.2 Ubuholi Behhovisi Likamongameli
  - 3.3 Ukwakheka Kwenhlangano
- 4. IMINININGWANEYOKUXHUMANA NOMGCINILWAZI KANYE NOSEKELA-MGCINILWAZI**
- 5. UMHLAMHLANDLELAWEKHOMISHANEYAMALUNGELO ESINTUYASENINGIZIMUAFRIKA NGOKUTHI USETSHENZISWA KANJANI UMTHETHO**
- 6. UKUFINYELELA KUMAREKHODI**
  - 6.1 INhloso Yalo Mthetho
  - 6.2 Sifaka kanjani isicelo sokufinyeleleka kumarekhodi
  - 6.3 Zifakwaphi izicelo
  - 6.4 Izimali Ezikhokhwayo Ezimisiwe
  - 6.5 Ukuvunywa nokwenqatshwa kwezicelo
  - 6.6 Ukukhalaza
  - 6.7 Indlela yokufaka isikhalazo kanye nezimali ezikhokhwayo zesikhalazo
- 7. UKUFAKWA KOLWAZI OLUSHA KUMANUWALI**
- 8. UKUTHOLAKALA KWEMANUWALI**

ISIXHUMELO A: IFOMU LESICELO

ISIXHUMELO B: ISHEDULI YEZIMALI EZIKHOKHWAYO

ISIXHUMELO C: AMAREKHODI AGCINIWE IHHOVISI LIKAMONGAMELI

ISIXHUMELO D: AMAFOMU OKUKHALAZA

## I. ISANDULELO NGUMQONDISI-JIKELELE

IHhovisi LikaMongameli, ngokuhlonipha uMthetho Wokukhuthaza Ukufinyeleleka Kolwazi (i-PAIA) wonyaka we-2000 (uMthetho wesi-2 wonyaka we-2000), lilungise imanuwali ukuze kukhuthazwe ukufinyeleleka kolwazi olugcinwe yiHhovisi Likamongameli. Le manuwali izohlinzeka umphakathi ngemihlahlandlela yokufinyeleleka kolwazi. Inqubo efana nalena izokhuthaza futhi ifeze isidingo esibalulekile sokuphoqelela ukubamba iqhaza komphakathi enqutsheni yokuthathwa kwezinqumo zeHhovisi LikaMongameli nakwezinye izinhlaka zomphakathi. Futhi izophinda isebenze njengendlela yeHhovisi LikaMongameli ekusetshenzisweni kwegunya lokuphatha ekuqinisekiseni ukusebenza ngesikhathi nangempumelelo kweqomthetho likazwelonke kanye nasekumemezeleni lelo qomthetho.

Umthetho wenziwa umthetho ukuze unike incazelo isidingo somthethosisekelo esibeka ukuthi umphakathi unelungelo lokufinyeleleka kolwazi olugcinwe uMbuso kanye nolwazi olugcinwe ngomunye umuntu, oludingekayo ukuze kusetshenziswe noma kuvikelwe nanoma imaphi amalungelo; Ukwamukelwa kwalo Mthetho kunikeza incazelo kuzidingo zoMthethosisekelo zokusebenzela obala, zokungamela ngempulelo nokuphendula kukahulumeni.

Ekwenzeni le manuwali, iHhovisi LikaMongameli kanye nohulumeni ewonke bazobe begqugquzela umkhuba wokusebenza ngendlela esobala kanye nokuphatha okuhle. Ukuqhubekisela phambili ubusobala bukahulumeni, iHhovisi LikaMongameli livuma ukuthi kuzoba khona imikhawulo ekukhuthazeni kukonke ukwengamela okuhle ngokusebenzisa ubusobala; Imikhawulo efana nalena ishiwo kumibandela yoMthetho, njengoba ichaza izimo ngaphansi kwayo okuzoba khona ukufinyeleleka okuncane noma okubekelwe imikhawulo olwazini lukahulumeni. Lezi zimo zingafaka lezo:

- okuhloswe ngazo ukuvikela ubungasese;
- ngokuqeqeshwa obumayelana nobumfihlo bezohwebo; kanye
- obumalana nokwengamela kangcono, ngempumelelo nakahle

Ukusetshenziswa kwale mikhawulo kuyokwenziwa ngendlela ezolinganisa ilungelo lokufinyeleleka namalungelo phakathi akuSomqulu Wamalungelo esiQeshini Somthethosisekelo waseRiphabhlikhi YaseNingizimi Afrika wonyaka wonyaka we-1996.



UNks Lusanda Mxenge  
IBamba-Mqondisi-Jikelele kanye noNobhala Wekhabhinethi  
IHhovisi LikaMongameli

## 2. UKUGUNYAZWA NGUMTHETHOSISEKELO KWEHHOVISI LIKAMONGAMELI

IHhovisi Likamongameli lithola ukugunyazwa kwalok uMthethosisekelo WaseRiphabhlikhi YaseNingizimi Afrika wonyaka wonyaka we-1996, njengoba uchitshiyelwe.

UMthethosisekelo ungumthetho omkhulu kuyo yonke waseRiphabhlikhi YaseNingizimi Afrika; Ukanye noSomqulu Wamalungelo, uMthethosisekelo wakha isisekelo sentando yeningi yaseNingizimu Afrika futhi uchaza amalungelo nemisebenzi yezakhamizi, futhi uchaza ukwakheka kukahulumeni.

Ukugunyazwa kweHhovisi LikaMongameli kutholwa ulwazi lwakho ngqo kuMthethosisekelo oshiwo ngenhla, ikakhulukazi:

- UMthethosisekelo WaseRiphabhlikhi YaseNingizimi Afrika, uMthetho we-108 wonyaka we-1996, njengoba uchitshiyelwe, ungumthetho omkhulu eRiphabhlikhi: Ukanye noSomqulu Wamalungelo, uMthethosisekelo wakha isisekelo sentando yeningi yaseNingizimu Afrika futhi uchaza amalungelo nemisebenzi yezakhamizi, futhi uchaza ukwakheka kukahulumeni. IHhovisi likaMongameli lihlala uMongameli nePhini likaMongameli weRiphabhlikhi, futhi ngakho-ke liyisikhungo esihlukile eMisebenzini Kahulumeni. Kukulesi simo somthethosisekelo lapho kuchazwa khona imingcele ebanzi yendima nezibopho zeHhovisi likaMongameli.
- IHhovisi likaMongameli likhona ukusebenzela uMongameli kanye nePhini likaMongameli ekwenzeni imisebenzi nezibopho zabo zomthethosisekelo, njengoba kushiwo esiQeshini sesi-5 soMthethosisekelo. IsiQephu sesi-5 soMthethosisekelo sichaza uMongameli njengeNhloko Yezwe kanye neNhloko Yomkhandlu Omkhulu Kazwelonke. Umsebenzi wakhe omkhulu ukuphakamisa, ukuvikela nokuhlonipha uMthethosisekelo njengomthetho omkhulu weRiphabhlikhi kanye nokukhuthaza ubumbano lwesizwe nalokho okuzoluhubekisela phambili.
- Isahluko sama-85 soMthethosisekelo sinikeza uMongameli igunya lokuphatha eRiphabhlikhi. Isimo sesu likaMongameli sifanele, ngenxa yalokho, sibonise le misebenzi kaMongameli kanye neyoYomkhandlu Omkhulu Kazwelonk awuholayo.

Ukugunyazwa kweHhovisi LikaMongameli kwenzele ukuba izikhulu eHhovisi LikaMongameli zikwazi ukwenza umsebenzi kanye nezibopho zazo ezizini kiwe.

Lesi simo somthethosisekelo ngakhoke sichaza imingcele ebanzi yendima nezibopho zeHhovisi kaMongameli njengenhlango, okungukuthi: ukusebenzela uMongameli kanye nePhini likaMongameli ekwenzeni imisebenzi nezibopho zabo zomthethosisekelo.

Ukuma kwamasu kweHhovisi LikaMongameli, ngenxa yalokhu, kukhombisa le misebenzi kaMongameli kanye noBaphathi Abakhulu Bakazwelonke abaphethwe nguye. Mayelana nalokhu, iHhovisi LikaMongameli lifanele liqinisekise ukuthi amasu abalulekile kanye nokusekelwa kwemisebenzi yokuphatha kukhona, ukuthi izinkambiso nemithetho egunyazayo ikhona futhi iyalandelwa, kanye nokuthi abasebenzi abanamakhono bayabuthwa futhi bagcinwe ukuze basebenzi isu lenhlangano ekusekeleni abaphathi.

### INHLOSO YETHU

Inhloso yeHhovisi likaMongameli yile:

Ukusebenza njengesikhungo sokuhlela amasu, ubuholi kanye nokuqapha uhulumeni ekusebenziseni uhlelo lukahulumeni, njengoba luqondiswa ngumthethosisekelo nokugunyazwa ukhetho.

Ukuphendula kwinhloso yeHhovisi likaMongameli kanye nasemaswini abalulekile kaHulumeni; inhlosombono, intshisekelo kanye namagugu eHhovisi likaMongameli ibe seyakhiwa ukuze inikeze umkhombandlela jikelele kanye nogqozo ekuhlangabezaneni nasekudluliseni izinhloso zegunya.

### INHLOSOMBONO YETHU

Ukwesekela inhloso yethu, uHlelo Lamasu ehhovisi LikaMongameli ikhombisa inhlosombono yeHhovisi likaMongameli:

**Njengokwenza kahle ekungameleni nasekuhlinzekeni ubuholi kuhulumeni nasephakathini**

### INTSHISEKELO

Ekufezeni le nhlosombono engenhla, iHhovisi likaMongameli lichaza intshisekelo ngale ndlela elandelayo:

Njengesikhundla esiphezulu sikahulumeni eNingizimu Afrika, iHhovisi likaMongameli lilwela ukufeza ngokuphelele uhlelo lamasu kahulumeni nokuhola:

- Imizamo yokweseka uguquko kwezomnotho nokwakhiwa kwamathuba emisebenzi;
- Imizamo yokwenza ngcono ukutholakala kwemfundo, amakhono nezempilo;
- Imizamo yokuhlanganisa umholo wezenhlabakahle ngezinsizakalo ezethembekile nezisezingeni eliphakeme;
- Imizamo yokuthuthukisa ukubandakanywa kwendawo kanye nokwethulwa kwezinsizakalo zohulumeni basekhaya;
- Imizamo yokukhuthaza umphakathi, nokwakha ubumbano lomphakathi kanye nemiphakathi ephephile;
- Imizamo yokwakha izwe elikwaziyo ukusebenza, elinenkambiso enhle nelithuthukayo; futhi

- Nemizamo yokuqhubekisela phambili izintshisekelo zezwe laseNingizimu Afrika nokwakha i-Afrika engcono nomhlaba ongcoco.

## IMIPHUMELA YAMASU YETHU

Ohlelweni Lamasu olumukelwe lonyaka we-2020-2025, iHhovisi likaMongameli lichaze imiphumela emihlanu yamasu okwenza ukuthi inhlangothi ikwazi ukugxila ngempumelelo futhi ibeke phambili umsebenzi wayo ekufezeni ukugunyazwa nomsebenzi walo. Yilokhu okulandelayo:

- 1) **Ubumbano lomphakathi, ubumbano lesizwe kanye noguquko kwezenhlalo olukhuthazwa ngobuholi obusebenzayo kanye nokuhlela kwemizamo**
- 2) **Ukubusa okuthuthukisiwe, amandla ombuso kanye nokwethulwa kwezinsizakalo ngobuholi obusebenzayo kanye nokuhlelwa kwemizamo.**
- 3) **Ukutshalwa kwezimali okwenziwe lula, ukukhuthazwa kwezohwebo, ukukhula komnotho kanye nokwakhiwa kwamathuba emisebenzi ngobuholi obusebenzayo kanye nokuhlelwa kwemizamo.**
- 4) **Ubudlewane bamazwe omhlaba nezwekazi obuthuthukisiwe beNingizimu Afrika ngobuholi obusebenzayo nokuhlelwa kwemizamo.**
- 5) **Izinhlalo zokuphatha zeHhovisi likaMongameli ezisebenzayo, eziyimpumelelo nezididiyelwe ezibhekiswe enhlanganweni evunyelwe ukufeza imiphumela yayo.**

## AMAGUGU ETHU

Amagugu nemigomo esekela okufunwa kweHhovisi likaMongameli kwinhlosombono kanye nentshisekelo yalo kususelwa emigomeni yeBatho-Pele futhi kuhambisana nezidinganiso noyinhloko okwethulwe esahlukweni se-195 soMthethosisekelo, ngale ndlela elandelayo:

Ukubaluleka kweHhovisi Likamongameli	Kusho ukuthini eMpeleni
<b>Ukumisela</b>	Ukuphila ngaleli gugu kusho ukuthi iHhovisi likaMongameli lizofuna: <ul style="list-style-type: none"> <li>• Khombisa ukuzibophezela;</li> <li>• Yenza okudingekayo ukuze umsebenzi wenziwe; futhi</li> <li>• Yiba ozidelayo, ozimisele, nonenhloso futhi nophokophele.</li> </ul>
<b>Ubuqotho</b>	Ukuphila ngaleli gugu kusho ukuthi iHhovisi likaMongameli lizofuna: <ul style="list-style-type: none"> <li>• Sebenzisa ukuzithiba futhi usebenze ngokuphatha kahle;</li> <li>• Khombisa ukugcina isikhathi, ukuthembeka, ukuthembeka nokuzibophezela ekufezeni izikhathi ezimisise;</li> <li>• Sebenza ngesizotha nangenhlonipho; futhi</li> <li>• Funa ukwenza bonke okusetshenzwa nabo bazizwe bebalulekile.</li> </ul>

Ukubaluleka kweHhovisi Likamongameli	Kusho ukuthini eMpeleni
<b>Ubuqotho</b>	Ukuphila ngaleli gugu kusho ukuthi iHhovisi likaMongameli lizofuna: <ul style="list-style-type: none"> <li>• Yazisa ukuvuleka, ukwethembeka, ukungaguquguquki kanye nokungakhethi;</li> <li>• Yenza ngobuqotho kuyo yonke imisebenzi yansuku zonke futhi ubonise ukuthobeka;</li> <li>• Yiba nokuzibophezela kwinkambiso enhle, futhi ubheke ubulungiswa nokungenzeleli; futhi</li> <li>• Sebenza ngokunakekela ungalaluli ulwazi oluyimfihlo.</li> </ul>
<b>Ukuziphendulela</b>	Ukuphila ngaleli gugu kusho ukuthi iHhovisi likaMongameli lizofuna: <ul style="list-style-type: none"> <li>• Ukuzibophezela kanye npokwenza ngendlela enobusobala; kanye</li> <li>• Yakha izindlela zokuxhumana ukuze kube nokuxoxisana kwalabo okusetshenziswana nabo</li> </ul>
<b>Ukusebenza ngokuzikhandla</b>	Ukuphila ngaleli gugu kusho ukuthi iHhovisi likaMongameli lizofuna: <ul style="list-style-type: none"> <li>• Ukukhombisa ukuzibophezela</li> <li>• Yenza okudingekayo ukuze umsebenzi wenziwe; futhi</li> <li>• Yiba ozidelayo, ozimisele, nonenhloso futhi nophokophele.</li> </ul>
<b>Umsebenzi Omuhle Kakhulu</b>	Ukuphila ngaleli gugu kusho ukuthi iHhovisi likaMongameli lizofuna: <ul style="list-style-type: none"> <li>• Yiba ngofuna imiphumela futhi wongayo emsebenzini wayo;</li> <li>• Qonda izidingo zamakhasimende, uphendule ngesikhathi, kahle nangempumelelo ezicelweni zamakhasimende; futhi                             <ul style="list-style-type: none"> <li>• Lwela ikhwalithi nokusebenza okukhulu.</li> </ul> </li> </ul>
<b>Ukuveza okusha</b>	Ukuphila ngaleli gugu kusho ukuthi iHhovisi likaMongameli lizofuna: <ul style="list-style-type: none"> <li>• Yiba ngocaba ajule futhi ubeke imibono emisha</li> </ul>
<b>Ukuphendula</b>	Ukuphila ngaleli gugu kusho ukuthi iHhovisi likaMongameli lizofuna: <ul style="list-style-type: none"> <li>• Yiba ngoqalayo ekunikezeni isisombululo</li> <li>• Jwayela ukushintsha izimo zangempela</li> <li>• Yiba ngocaba ajule futhi ubeke imibono emisha</li> </ul>
<b>Ukusebenza Ngokucophelela Nolwazi</b>	Ukuphila ngaleli gugu kusho ukuthi iHhovisi likaMongameli lizofuna: <ul style="list-style-type: none"> <li>• Khombisa ukufaneleka ekwenzeni imisebenzi nezibopho</li> <li>• Khombisa inkmbiso enhle nokwethembeka</li> </ul>

## 3. UKWAKHEKA KWEHHOVISI LIKAMONGAMELI

### 3.1 ISENDLALO

IHhovisi likaMongameli lenze izinguquko ezinkulu ukuze lidlale indima yamasu ezwe lonke elindelwe yiHhovisi. IHhovisi LikaMongameli, njesiPhathimandla Esikhulu, lidlulisele lomsebenzikuMqondid-Jikelele (uDG) njengeNhloko Yehhovisi LikaMongameli. u-DG unendima yokuba asize ngokwamasu eqapheni nasehleleni izinhlelo zikahulumeni. Naye-ke u-DG weHhovisi likaMongameli, usenikeze umsebenzi wakhe wokuba nguMgcini Wama-akhawunti isikhulu Esiphethe Imisebenzi (u-COO) ngokoMthetho Wokuphathwa Kwezimali Zikahulumeni wonyaka we-1999 (uMthetho woku-1 wonyaka we-1999).

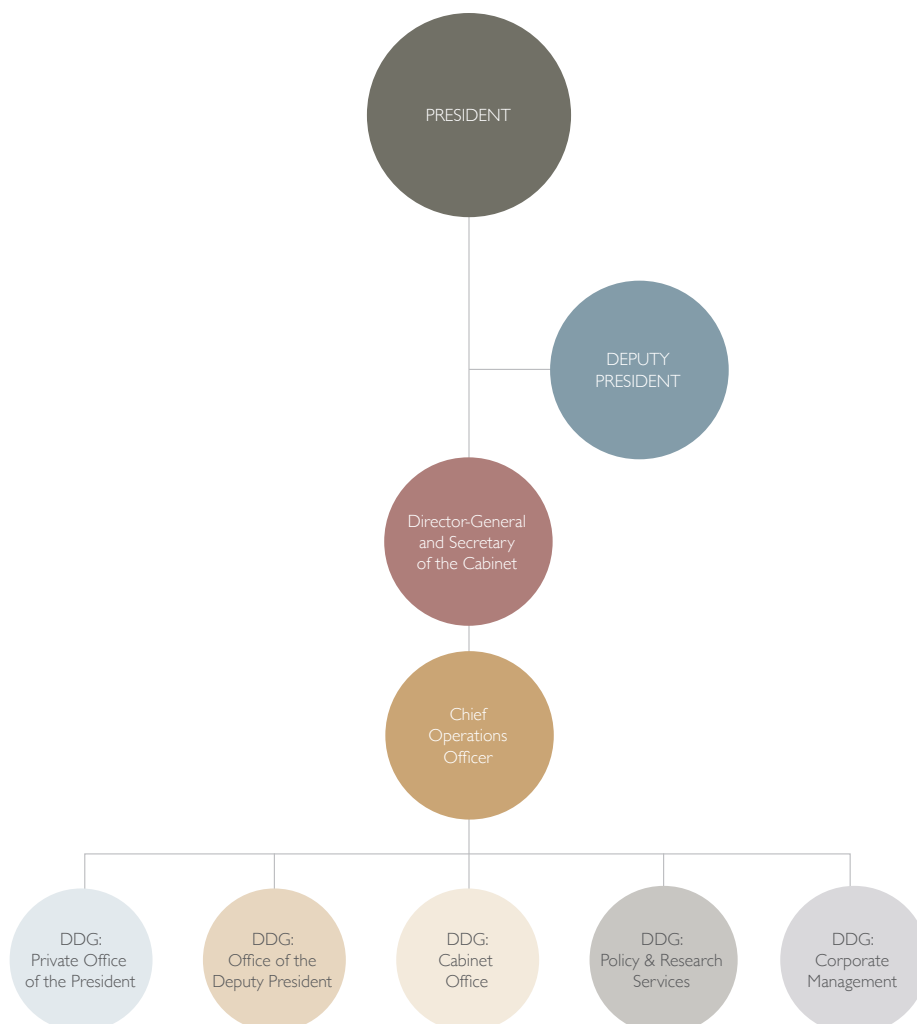
### 3.2 UBUHOLI BEHHOVISI LIKAMONGAMELI

Ubuholi beHhovisi LikaMongameli bakhiwe abalandelayo:

- UMnu Cyril Ramaphosa  
(President)
- UMnu David Mabuza, MP  
(USekela-Mongameli)
- UNks. Lusanda Mxenge  
(iBamba Lomqondisi-Jikelele kanye nSekela Nobhala Wekhabhinethi)
- UMnu.Thulani Mdakane  
(iBamba Esiphathe Imisebenzi)
- UNks Roshene Singh  
(uSekela Mqondi-Jikelele: iHhovisi Langasese LikaMongameli)
- UMnu Thamsanqa Ngwenya  
(iNhloko: iHhovisi LikaSekela-Mongameli)
- UNks Matsietsi Mokholo  
(USekela Mqondisi-Jikelele: Ukuphathwa Kwenhlangano)
- UMnu Lawrence Matemba  
(iBamba Lenhloko: Inqubomgomo Nezinsizakalo Zocwaningo)
- UDkt Kgosientsho Ramokgopa  
(iNhloko: IHhovisi lokutshalwa Kwezimali Nezingqalasizinda)

### 3.3 UKWAKHEKA KWENHLANGANO

Ukwakheka Kwenhlangano yeHhovisi likaMongameli kunjengoba kulandela:



Ngokwesakhiwo esamukelwe sesabelomali, iHhovisi likaMongameli lakhiwe yilezi zinhlelo nezinhlelo ezilandelayo:

<b>UHlelo Lwesabelozimali</b>	<b>Ukwakheka Kohledlwana</b>	<b>Inhloso</b>
<b>Uhlelo Loku-1 - Ukuphatha</b>  <b>Inhloso:</b> Ukuhlinzeka ngobuholi obuphumelelayo kanye nokusekelwa kwezinsizakalo zokuphatha kulabo abaphethe nakumagatsha eHhovisi Likahulumeni ngokufeza intshisekelo nokugunyazwa kweHhovisi LikaMongameli.	<b>1.1 Ukuphathwa</b>	<i>Ukuhlinzeka ngobuholi bobukhaliphile, izinsizakalo zokuphatha kanye nokusekelwa kumnyango.</i>
	<b>1.2 IHhovisi Langasese LikaMongameli</b>	<i>Uhlinzeka uMongameli ngamasu okuphatha kanye nokusekela uMongameli ekwenzeni imisebenzi yakhe yoMthethosisekelo nasekuholeni umsebenzi kahulumeni.</i>
	<b>1.3 Ihhovisi likaSekela-Mongameli</b>	<i>Uhlinzeka ngokusekela kuSekela-Mongameli ekwenzeni imisebenzi thwalo yakhe ekufezeni igunyazwa ukhetho kanye nenhlosombono yeHhovisi likaMongameli.</i>
<b>UHlelo lwesi-2 - Ukusekelwa Kokuphatha</b>  <b>Inhloso:</b> Ukuhlinzeka ngokusekelwa kwamasu okuphatha ukwenza iKhabhinethi igxilise ukuphendula kanye nokuhlangana kwezinqubomgomo ngokusebenzisa ukuhlela okubandakanyayo, ukuhlelelwa nokusetshenziswa kwenqubomgomo kwe-ajenda yamasu kahulumeni.	<b>2.1 IHhovisi Lekhabhinethi</b>	<i>Ukuhlinzeka ngokusekelwa kwamasu nokuphatha okuvumela iKhabhinethi igxilise ukuphendula kanye nokuhlangana kwezinqubomgomo ngokusebenzisa ukuhlela okubandakanyayo, ukuhlelelwa nokusetshenziswa kwenqubomgomo ye-ajenda yamasu kahulumeni.</i>
<b>Uhlelo lwesi-3 - Ukuhlola kanye Nzinsizakalo Zocwango</b>  <b>Inhloso:</b> Ukuhlinzeka ngokwesekwa kwenqubomgomo kanye nocwaningo kwiMigomo Yezombusazwe eHhovisi LikaMongameli ekusebenzeni ukugunyazwa kwawo komthethosisekelo futhi ngaphakathi kokuqukethwe izinhlosongangi zihulumeni.	<b>3.1 Ukuhweba kwezomnotho nokutshalwa kwezimali</b>	<i>Ukukhuthaza ukuhambisana kwenqubomgomo ngaphakathi kwezomnotho, izinqubomgomo kanye nezinhlelo nezinhlelo zokutshalwa kwezimali.</i>
	<b>3.2 Ezokuphepha Nobudlelwano Namazwe Omhlaba</b>	<i>Ukukhuthaza ukuhambisana kwenqubomgomo emkhakheni wezokuphepha kanye nobudlelwano bamazwe omhlaba.</i>
	<b>3.3 Ukusekelwa Kwezingqalasizinda Nesabelozimali</b>	<i>Ukukhuthaza ukuhambisana kwenqubomgomo ngaphakathi ohlelweni lwezingqalasizinda kanye nokusekela kwesabelozimali.</i>
	<b>3.4 Ukuvikelwa Komphakathi Nokuthuthukiswa Komnotho Ongababantu</b>	<i>Ukukhuthaza ukuhambisana kwenqubomgomo ngaphakathi ekuvikelweni komphakathi nokuthuthukiswa komnotho ongababantu</i>
	<b>3.5 Ukungenelela &amp; Ukuphendula Ngokushesha</b>	<i>Ukuhlinzeka ngokusekelwa kokungenelela kukahulumeni.</i>
	<b>3.6 Ukwengamela Nokuthuthukiswa Kwesikhungo</b>	<i>Ukukhuthaza ukuhambisana kwemigomo ekuphathweni nasekuthuthukisweni kwezikhungo.</i>
	<b>3.7 Ukuhlolwa Komthelela Kwezomnotho Nezenhlalo (i-SEIAS)</b>	<i>Ukuhlinzeka ukwesekwa ngokwenziwa ngenqubomgomo, iqoqomthetho kanye nezimiso.</i>



#### 4. IMINININGWANE YOKUXHUMANA NOMGCINILWAZI KANYE NOSEKELA- MGCINILWAZI

Ngokwe-PAIA, uMthetho wesi-2 wonyaka we-2000, u-DG weHhovisi LikaMongameli nguMgcinilwazi. U-COO unikezwe imisebenzi yMgcinilwazi futhi wanikwa isikhundla njengoSekela-Mgcinilwazi. Imininingwane yabo yokuxhumana imi kanje:

##### 4.1 UMGCINILWAZI

###### **IBamba-Mqondisi-Jikelele kanye noNobhala Wekhabhinethi**

UNks Lusanda Mxenge  
Private Bag X1000  
Pretoria  
0001

###### **Noma**

Union Buildings  
Government Avenue  
Pretoria

**Ucingo:** 012 300 5354

**Ifeksi:** 086 687 5354

**I-imeyili:** informationofficer@presidency.gov.za

##### 4.2 USEKELA-MGCINILWAZI

Ibamba lesiKhulu Esiphethe Imisebenzi  
UMnu Thulani Mdakane  
Private bag x 1000  
Pretoria  
0001

###### **Noma**

Union Buildings  
Government Avenue  
Pretoria

**Ucingo:** 012 300 5376

**Ifeksi:** 086 687 2230

**I-imeyili:** InformationOfficer@presidency.gov.za

#### 5. UMHLAMHLANDLELA WEKHOMISHANE YAMALUNGELO ESINTU YASENINGIZIMU AFRIKA (I-SAHRIC) NGOKUTHI USETSHENZISWA KANJANI UMTHETHO

Umhlamhlandlela ngokuthi isetshenziswa kanjani i-PAIA yesi-2 yonyaka we-2000 uyatholakala ku-SAHRIC. Imibuzo ingaqondiswa:

###### **Ku-SAHRIC**

IYunithi ye-PAIA  
Research and Documentation Department  
Private Bag X2700  
Houghton  
2041

**Ucingo:** 011 877 3600

**Ifeksi:** 011 403 0682

**I-imeyili:** PAIA@sahric.org.za

**I-website:** www.sahric.org.za

#### 6. UKUFINYELELA KUMAREKHODI

Ulwazi olugcinwe kule manuwali luhlinzeka ngomhlahlandlela wokuthi umphakathi ungakuthola kanjani ukufinyeleleka kumarekhodi agcinwe noma angaphansi kolawulo lweHhovisi LikaMongameli.

##### 6.1 INHLOSO YALO MTHETHO

Ukwenzela izinhloso zoMthetho ukuze kusebenze ilungelo lomthethosisekelo lokufinyeleleka kunanoma iluphi ulwazi olugcinwe uMbuso kanye nanoma iluphi ulwazi olugcinwe ngomunye umuntu futhi oludingekayo ukuze kusetshenziswe noma kuvikelwe nanoma imaphi amalungelo.

Ukuphela kwamarekhodi okukhulunye ngawo eMthethweni angacelwa futhi isicelo kanye nempendulo lapho ifanele ihambisane nemibandela yoMthetho.

Nanoma imaphi amanye amarekhodi angacelwa:

- kungakathaliseki uhlobo;
- agcinwe noma angaphansi kolawulo lweHhovisi LikaMongameli noma olunye uhlobo lukahulumeni;
- noma ngabe enziwe noma engenziwanga yiHhovisi LikaMongameli.

Umfakisicelo ufanele anikezwe ukufinyeleleka kurekhodi uma:

- uMthetho usebenza kurekhodi elifana naleli;
- umfakisicelo uhlonipha zonke izidingo zenkambiso eziseMthethweni ezimayelana nesicelo sokufinyeleleka kurekhodi; futhi
- ukufinyeleleka kulelo rekhodi akwaliwe nganoma ngasiphi isizathi njengoba kushiwo eMthethweni.

Uhlu oluphelele lamarekhodi angatholakala eHhovisi LikaMongameli lukuSixhumelo C sale manuwali.

##### 6.2 USIFAKA KANJANI ISICELO SOKUFINYELELEKA KUMAREKHODI

- Umfakisicelo ufanele asebenzise ifomu eliphrintwe kuGazethi Kahulumeni. Ikopi yaleli fomu ifakiwe kule manuwali kuSixhumelo A.
- Uma umfakisicelo engakwazi ukufunda noma ukubhala, noma enokukhubazeka angenza isicelo serekhodi ngomlomo. IHhovisi lingasiza abafakisicelo abakwazi ukufunda nokubhala noma abanokukhubazeka ukuba bagcwalisela ifomu. Umfakisicelo uzobe esenikezwa ikhopi yesicelo (Uhlobo okutholakala ngalo ukufinyeleleka liyacelwa).
- Umfakisicelo ufanele asho uma isicelo kungesekhopi yerekhodi noma uma umfakisicelo ethanda ukuhlola irekhodi ezakhiweni zeHhovisi LikaMongameli.
- Kokunye, uma irekhodi lingewona umbhalo osephetheni, lingahlola ngendlela eceliwe, lapho kukhona.

- Uma umfakisicelo ecela ukufinyeleleka kurekhodi ngohlobo oluthile, umfakisicelo ufanele afinyeleleke ngendlela ayicelile. Lokhu kungaphandle uma ukwenze njalo kuzothikameza ukusebenza kweHhovisi LikaMongameli, noma kone irekhodi, noma kwephule ilungelo lokushicilelwe okungelona eloMbuso.
- Uma umfakisicelo ecela ulwazi elucelela omunye umuntu, isikhundla sokuthi isicelo usenza engubani kufanele sishiwo. Ukunqanda ukuhlukunyezwa koMthetho, iHhovisi LikaMongameli ligodla ilungelo lokucela ubufakazi besiphathimandla esenza isicelo sisenzela omunye umuntu.

### 6.3 ZIFANELE ZIFAKWE KU{PHI IZICELO

- Izicelo zamarekhodi zifanele zisiwe kuMgcinilwazi noma kuSekela-Mgcinilwazi. (Iminingwane yokuxhumana yezikhulu enikeziwe).
- Ukwenzela izizathu zokuphepha, abafakizicelo abafuna ukuletha izicelo emahhovisi e-Union Buildings/e-Tuynhuys bazodingeka ukuba baveze ubudakazi obuhle bokuzazisa.

### 6.4 IZIMALI EZIKHOKHWAYO EZIMISIWE

UMthetho uhlinzekela izinhlobo ezimbili zezimali ezikhokhwayo:

- Imali yesicelo, okuzoba yimali elinganayo; kanye nemali yokufinyeleleka, ezobalwa ngokubheka izindleko zokukhiqiza, ukucinga isikhathi nezindleko zokulungisa, kanye nezindleko zokuposa (**Uhlu lalezi zimali ezikhokhwayo lungatholakala kusiXhumelo B**).
- Imali ekhokhwayo enqunyiwe ifanele ifakwe kwi-akhawunti yasebhangwe yeHhovisi LikaMongameli njengoba inikezwe ngezansi:

**Igama le-akhawunti:** The Presidency

**Ibhangwe:** First National Bank

**Ikhodi yegatsha:** 253 145

**Igama legatsha:** FNB, Corporate, Pretoria

**Inombolo ye-akhawunti:** 6202557143

**Ireferensi:** I-PAIA kanye negama lomfakisicelo

**Sicela uthumele ubufakazi benkokhelo nge-imeyili ku-[InformationOfficer@presidency.gov.za](mailto:InformationOfficer@presidency.gov.za)**

- Kungakapheli izinsuku ezinhlane isicelo sitholiwe, uMgcinilwazi noma uSekela-Mgcinilwazi, ngesaziso, uzodinga ukuba umfakisicelo, ngaphandle komfakisicelo ocela ulwazi ngaye, ukuba akhokhe imali emisiwe yesicelo (uma ikhona), ngaphambu kokuqhutshekwa kusetshenzwe isicelo.
- Uma ukucingwa kwerekhodi lohlobo lukahulumeni kwenziwe, kanye nokulungisa kwerekhodi ukuba lidalulwe, kumbandakanya amalungiselelo okwenza ukuba litholakale ngohlobo oluceliwe, uMgcinilwazi uzokwazisa umfakisicelo, ngaphandle komfakisicelo ocela ulwazi olungaye ukuba akhokhe ingxenye yemali yokufinyeleleka emisiwe (engadluli ikukodwa kobuthathu), okufanele ikhokhwe uma isicelo sivunyiwe.

- Umfakisicelo osicelo sakhe sokufinyeleleka kwerekhodi sivunyiwe, ufanele akhokhe imali yokufinyeleleka ukuze kukhiqizwe futhi kucingwe futhi kulungiswe, futhi akhokhele nanoma yisiphi isikhathi esidingekayo ukuba singezwe ngamahora ukuze kucingwe futhi kulungiselelwe ukudalulwa kwerekhodi, kubandakanya ukwenza amalungiselelo okuthi litholakale ngohlobo oluceliwe.
- Uma idiphozithi isikhokhiwe mayelana nesicelo sokufinyeleleka, futhi isicelo sinqatshwa, uMgcinilwazi othintekayo ufanele abuyisele imali kumfakisicelo.

### 6.5 UKUVUNYWA/UKWENQATSHWA KWESICELO

Zonke izicelo zokufinyeleleka zizocutshungulwa, futhi ukuvunywa kanye nokwenqatshwa lapho kuzoba ngokuhambelana nemibandela yoMthetho.

### 6.6 UKUKHALAZA

Esimweni lapho isicelo sinqatshwa, umfakisicelo unelungelo lofaka isikhalazo sangaphakathi aphikise isinqumo soMgcinilwazi, nesiphathimandla esifanele. Iminingwane yeSiphathimandla Esifanele injengoba ilandela:

#### **UNgqongqoshe Ehhovisini Likamongameli**

Private Bag X1000

Pretoria

0001

**Ucingo:** 012 300 5376

**Ifeksi:** 086 683 2230

### 6.7 INDLELA YOKUFAKA ISIKHALAZO KANYE NEZIMALI EZIKHOKHWAYO ZESIKHALAZO

Izikhazizo zifanele zifakwe ngefomu elimisiwe (**IsiXhumelo D**) futhi kungakapheli isikhathi esimisiwe — Izikhathi ezimisiwe zinjengoba zilandela:-

- kungakapheli izinsuku ezingamashumi ayisithupha (60);
- Uma isaziso esiya kwingxenye yesithathu sidingeka, kungakapheli izinsuku ezingamashumi amathathu (30) ngemuva kokuba isaziso sinikwe loyo okhalaza ngesinqumo esikhalazelwayo, noma uma isaziso esiya kokokhalazayo singadingeki, ngemuva kokuba isinqumo sathathwa.

Isikhalazo sifanele ukuba sifike noma sithunyelwe kuMgcinilwazi ekheleini elinikiwe leHhovisi LikaMongameli.

Isikhalazo sifanele sisho isihloko sesikhalazo futhi sisho nezizathu zokukhalaza kwangaphakathi, futhi singafaka nanoma ngabe iluphi olunye ulwazi olufanele olwaziwa ngumfakisikhalazo.

Uma, ukwengeza kwimpendulo ebhalwe phansi, umfakisikhalazo efuna ukwaziswa ngesinqumo sokukhalaza kwangaphakathi nganoma iyiphi indlela, ufanele asho leyo ndlela aphinde ahlinzeke ngemininingwane edingekayo yokwaziswa kanjalo.

Azikho izimali ezikhokhwayo zokukhalaza zikhokhwa ngumfakisicelo.

## **7. OKUDINGEKAYO OMKUMAYELANA NOKUSETSHENZWA KOLWAZI LOMUNTU NGQO**

Umthetho Wokuvikelwa Kwemininingwane Yabantu wonyaka we-2013 (uMthetho wesi-4 wonyaka we-2013) wenza kusebenze isahluko ise-14 soMthethosisekelo esihlinzeka ngokuthi wonke umuntu ilungelo lobumfihlo. UMthetho ukhuthaza ukuvikelwa kolwazi lomuntu siqu olucutshungulwa izinhlaka zomphakathi nezingasese futhi ufuna ukulinganisela ilungelo lobumfihlo namanye amalungelo, njengokufinyeleleka kolwazi.

Lo Mthetho usuqalisiwe ukusebenza Lo Mthetho ususebenze ngokukhulayo, nezahluko eziningi zoMthetho sezisetshenziswe ngo-Ephreli 2014. Izigaba 2 kuya ku-38; izigaba 55 kuya ku-109; isigaba 111; futhi isigaba 114 (1), (2) no (3) sizoqala mhla lu-1 Ntulikazi 2020. Isahluko sama-2 ukuya kwesama-38; isahluko sama-55 ukuya kwese-109; isahluko se-111; kanye nesahluko se-114 (1), (2) no-(3) zizoqala ukusebenza mhla zi-1 Julayi 2020.

## **8. UKUFAKWA KOLWAZI OLUSHA KUMANUWALI**

IHhovisi LikaMongameli, uma kudingeka, lizofaka ulwazi olusha bese lishicilela imanuwali yalo njalo ngonyaka wesithathu noma uma kukhona izinguquko zoKuphatha ukuze kuqinisekise ukuqhubeka kokusetshenziswa kanye nokufaneleka.

## **9. UKUTHOLAKALA KWEMANUWALI**

Le manuwali itholakala ngesiNgisi kuphela, ngezindlela ezilandelayo:

- Ifakwe ku-website yeHhovisi LikaMongameli ethi:  
[www.presidency.gov.za](http://www.presidency.gov.za)
- Isiwe kwa-SAHRC.

Yamukelwe



UMnu Thulani Mdakane  
Ilbamba LikaSekela-Mgcinilwazi  
Usuku:



**C. Imininingwane yomuntu ofakelwa isicelo**

Lesi sahluko kufanele sigcwaliswe kuphela uma isicelo senzela omunye umuntu.

Amagama aphelele nesibongo: \_\_\_\_\_

Inombolo kamazisi/ye-ID: \_\_\_\_\_

**D. Imininingwane yerekhodi**

- (a) Nikeza ngemininingwane ephelele yerekhodi okucelwa ukufinyeleleka kulo, kumbandakanya inombolo yereferensi uma uyazi, ukwenzela ukuthi litholakale irekhodi.
- (b) Uma isikhala osinikiwe sisincane, sicela uqhubeke ekhasini eliseceleni bese ulinamathisela kuleli fomu. Umfakisicelo kufanele asayinde onke amaphepha angeziwe.

1. Ukuchazwa kwerekhodi noma izingxenye ezifanele zerekhodi:

---

---

---

---

---

---

---

---

2. Inombolo yereferensi, uma ikhona: \_\_\_\_\_

3. Nanoma ngabe imiphi eminye imininingwane yerekhodi:

---

---

---

---

---

---

---

---

4. Ingabe kuphuthuma kangakanani ukudingeka kwaleli rekhodi? Shono izizathu zokuphuthuma.

---

---

---

---

---

---

---

---

**E. Izimali ezikhokhwayo**

- (a) Isicelo sokufinyeleleka kwirekhodi, ngaphandle kwerekhodi eliphethe ulwazi ngaloye muntu ngqo, sizosetshenzwa kuphela ngemuva kokuba imali yesicelo engama-R35.00 isikhokhiwe
- (b) Uzokwaziswa ngemali edingeka ukuba ikhokhwe njengemali ekhokhwayo yesicelo
- (c) Imali ekhokhwayo yokufinyeleleka kwirekhodi ilele ohlotsheni ukufinyeleleka okudingeka ngalo kanye nesikhathini esidingekayo esifanele ukucinga nokulungisa irekhodi
- (d) Uma ufaneleka ukuba udedelwa ukuba ukhokhe nanoma ngabe iyiphi imali ekhokhwayo, sicela usho izizathu sokudedelwa

Isizathu sokudedelwa ukuba ukhokhe izimali:

---

---

---

---

---

---

---

---

**F. Uhlobo lokufinyeleleka kwirekhodi**

Uma uvinjwe ukuba nokukhubazeka ukuba ufunde, ubukeze noma ulalele irekhodi ngohlobo ukufinyeleleka okuhlinzekwe ngalo ku-1 ukuya ku-4 ngezansi, shono ukukhubazeka kwakho futhi usho uhlobo irekhodi elidingeka ngalo				
Ukukhubazeka:		Uhlobo irekhodi elidingeka ngalo:		
Faka uphawu u-X ebhokisini elifanele. AMANOTHI: (a) Ukuhambisana nesisicelo sakho sokufinyeleleka olwazini ngohlobo oluphawuliwe kungalala ohlotsheni irekhodi elitholakala ngalo. (b) Ukufinyeleleka ngohlobo oluceliwe kunganqathswa ezimweni ezithile. Ezimweni ezifana nalezi uzokwaziswa uma ukufinyeleleka kuzotholakala ngolunye uhlobo. (c) Imali ekhokhwayo yokufinyeleleka kwirekhodi, uma ikhona, izonqunywa kancane nguhlobo lokufinyeleleka oluceliwe.				
1. Uma irekhodi linguhlobo olubhaliwe noma olugayiwe:				
	<b>Ikopi yerekhodi*</b>		<b>Ukuhlolwa kwerekhodi</b>	
2. Uma irekhodi lakhiwe imifanekiso ebukwayo (kumbandakanya izithombe, amaslayidi, okuqoshiwe kwevideo, imifanekiso eyakhiwe ngekhompyutha, imidwebo, njll.)				
	<b>Ukubuka imifanekiso</b>		<b>Ikopi yezithombe*</b>	<b>Ukubhala ngezithombe*</b>
3. Uma irekhodi lakhiwe ngamagama noma ngolwazi olungakhiqizwa futhi ngomsindo				
	<b>Ukulalela umsindo oqoshiwe (noma ikhasehi lomsindo)</b>		<b>Umbhalo womsindo oqoshiwe* (Umbhalo obhaliwe noma ogayiwe)</b>	
4. Uma irekhodi ligcinwe kwikhompyutha noma ngohlobo olufundeka ngomshini				
	<b>Ikopi egayiwe yerekhodi*</b>		<b>Ikopi egayiwe yolwazi olususelwa kwirekhodi*</b>	<b>Ikopi yohlobo olufundekayo ngekhompyutha* (istifi noma ikhompekthi diskhi)</b>
*Uma ucele ikopi noma umbhalo werekhodi (elingenhla), ingabe uthanda ukuba ikopi noma umbhalo werekhodi uposelwe kuwe? <b>Imali yokuposa iyakhokhwa</b>			<b>YEBO</b>	<b>CHA</b>
Qaphela ukuthi uma irekhodi lingatholakali ngolimi oluthandayo, ukufinyeleleka kungatholakala ngolimi irekhodi elitholakala ngalo				
<b>Yiluphi ulimi ongathanda ukuthola ngalo irekhodi?</b>				

**G. Isaziso ngesinqumo mayelana nesicelo sokufinyeleleka**

*Uzokwaziswa ngokubhaliwe ngesinqumo ukuthi isicelo sakho sivunyiwe/senqatshiwe. Uma ufisa ukwaziswa ngenye indlela, sicela uyisho leyo ndlela futhi uhlinzeke ngemininingwane evumela ukuhambisana nesicelo sakho.*

Ungathanda ukwaziswa kanjani ngesinqumo mayelana nesicelo sakho sokufinyeleleka kwirekhodi?

---

---

---

Isayindwe e-/o- ..... ngalolu suku lomhla zi-.....ku-..... ngonyaka we-20.....

\_\_\_\_\_  
ISIGINESHA YOMFAKISICELO/UMUNTU OFAKELWA ISICELO

**ISIXHUMELO B**

ISHEDULI YEZIMALI EZIKHOKHWAYO

Imali yekopi yemanuwali njengoba icatshangwa kuSimiso sesi-5 (c) sawo wonke amakopi afothokopiwe ekhasi ubukhulu balo obungu-A4 noma ingxenye	ama-R0-60
<b>Izimali zokukhiqiza okukhulunywe ngazo kuSimiso sesi-7(1) zinjengoba zilandela:</b>	
(a) Onke amafothokopi obukhulu bekhazi bungu-A4 noma ingxenye ngokunjalo	ama-R0-60
(b) Onke amakopi agayiwe obukhulu bekhazi bungu-A4 noma ingxenye ngokunjalo agcinwe kwikhompyutha noma ngendlela ye-elekthronikhi noma ngendlela fundeka ngomshini.	ama-R0-40
(c) Ikopi enguhlobo olufundeka ngekhompyutha ku- (i) sitifi diskhi (ii) khompekthi diskhi	ama-R5-00 ama-R40-00
(d) Ukubhalwa phansi kwemifanekiso ebukwayo (i) ikhasi lobukhulu obungu-A4 noma ingxenye ngokunjalo (ii) Ikopi yemifanekiso ebukwayo	ama-R22-00 ama-R60-00
(e) Ukubhalwa phansi kwemisindo erekhodiwe (i) ikhasi lobukhulu obungu-A4 noma ingxenye ngokunjalo (ii) Ikopi yemisindo erekhodiwe	ama-R12-00 ama-R17-00
Imali yesicelo ekhokhwa ngumfakisicelo, ngaphandle kozifakela yena uqobo isicelo, okukhulunywe ngayo kuSimiso sesi-7(2)	ama-R35-00
<b>Izimali zokufinyeleleka ezikhokhwa ngumfakisicelo okukhulunywe ngazo kuSimiso sesi-7(3) zinjengoba zilandela:</b>	
(a) Onke amafothokopi obukhulu bekhazi bungu-A4 noma ingxenye ngokunjalo	ama-R0-60
(b) Onke amakopi agayiwe obukhulu bekhazi bungu-A4 noma ingxenye ngokunjalo agcinwe kwikhompyutha noma ngendlela ye-elekthronikhi noma ngendlela fundeka ngomshini	ama-R0-40
(c) Ikopi enguhlobo olufundeka ngekhompyutha ku- (i) sitifi diskhi (ii) khompekthi diskhi	ama-R5-00 ama-R40-00
(d) Ukubhalwa phansi kwemifanekiso ebukwayo (i) ikhasi lobukhulu obungu-A4 noma ingxenye ngokunjalo (ii) Ikopi yemifanekiso ebukwayo	ama-R22-00 ama-R60-00
(e) Ukubhalwa phansi kwemisindo erekhodiwe (i) ikhasi lobukhulu obungu-A4 noma ingxenye ngokunjalo (ii) Ikopi yemisindo erekhodiwe	ama-R12-00 ama-R17-00
(f) Ukucinga nokulungiselela ukuba irekhodi lidalulwe, ihora ngalinye noma ingxenye yehora, kushiya ngaphandle ihora lokuqala,	ama-R15-00 ihora ngalinye
2. Ukwenzela izinhloso zeSahluko sama-22(2) se-PAIA, okulandelayo kuyasebenza: a. Amahora ayisithupha njengamahora azodlulwa ngaphambu kokuba kukhokhwe idiphozi b. Okukodwa kwesithathu semali yokufinyeleleka ekhokhwa njengediphozi ngumfakisicelo	
3. Imali yokuposa okuyiyona ekhokhwayo uma ikopi yekhodi kufanele ithunyelwe ngeposi kumfakisicelo	



## ISIXHUMELO C

### AMAREKHODI AGCINIWE IHHOVISI LIKAMONGAMELI

- Izimpawu zesizwe
- Izindondo zesizwe
- Imibiko yabezindaba
- Amaphrofayili Ezikhulu eHhovisini Likamongameli
- Ukuhlelwa Kwamasu
- Imibiko Yonyaka
- Izabelozimali
- Izitatimende Zezimali
- Uhlaka Lwezindleko Zesikhathi Esimaphakathi
- Uhlelo Lokuthuthukiswa Kokwethulwa Kwezinsizo
- USomqulu Wezinsizo kanye Zezinqubo Zokusebenza Ezimisiwe
- Izinqubomgomo kanye namamanuwali
- Amaminithi namarejista emihlangano angenziwanga mfihlo
- Imibhalo Yokuphathwa Kokusebenza
- Amafayela abantu
- Ukudalula Ezezimali Zabaphathi Bomsebenzi Abakhulu
- Amanuziletha kanye namaphephabhuku angaphakathi
- Amarekhodi emihlangano yokucobelelana ngolwazi nezinkomfa
- Izivulwano nabaphakeli
- Ukubuyekeza Konyaka Kwekhomishani Ezimele Lemiholo Yalabo Abasebenzela Umphakathi
- Irejista yamalungu ayizikhulu - ISahluko Somphakathi
- Ukubuyekeza Konyaka: Amaholo nezibonelelo zalabo abasebenzela umphakathi
- Amazinga Nemithetho Yenkambo Elungile
- Uhlelo Lonyaka LukaMongameli
- Uhlelo Lonyaka LukaSekela-Mongameli
- Izinkulumo ZikaMongameli, ZikaSekela-Mongameli kanye NezikaNgqongqoshe
- IZimpendulo Zemibuzo Yephalamende
- Izinhlelo Zokusebenza Zegatsha
- UHlelo Lokusebenza Lonyaka
- Izinhlelo Zephalamende
- Amathenda kanye Nezikhala Emisebenzi
- Ulwazi olumayelana nokuqeqeshwa kwabasebenzi
- Amanuziletha angaphakathi
- Amarejista Empahla

ISIXHUMELO D

UFOMU B

ISAZISO NGESIKHALAZO SANGAPHAKATHI

(ISahluko sama-75 soMthetho Wokufinyeleleka Olwazini wonyaka we-2000 (uMthetho wesi-2 we-2000)  
[ISimiso sesi-8]

SHONO INOMBOLO YAKHO YEREFERENSI:

.....

A. Imininingwane yohlaka lukahulumeni

UMgcinilwazi: uNks. Ms. Lusanda Mxenge (iBamba Lomqondisi-Jikelele kanye noNobhala Wekhabhinethi)  
/noma

USEkela-Mgcinilwazi: uMnu. Thulani Mdakane (Ibamba LesiKhulu Esingumphathl Wemisebenzi)

IHhovisi Likamongameli  
Private Bag X 1000  
Pretoria  
0001

INingizimu Afrika  
Ucingo: (012) 300 5376  
Ifeksi: (086) 683 2230

[www.thepresidency.gov.za](http://www.thepresidency.gov.za)  
[informationofficer@po.gov.za](mailto:informationofficer@po.gov.za)

B. Imininingwane yomfakisicelo/yengxenywe yesithathu efaka isikhalazo sangaphakathi

- (a) Imininingwane yomuntu ofaka isikhalazo sangaphakathi ifanele inikezwe ngezansi.  
(b) Ubufakazi bokuthi sifakwa njengobani isikhalazo ngokwesikhundla, uma bukhona, bufanele bufakwe.  
(c) Uma okhalazo eyingxenywe yesiyhathu, futhi hhayi umuntu okunguyena yena ofake isicelo sokufinyeleleka kolwazi, imininingwane yomfakisicelo kufanele inikezwe ku-C ngezansi.

Amagama aphelele nesibongo: \_\_\_\_\_

Inombolo kamazisi/ye-ID: \_\_\_\_\_

Ikheli leposi: \_\_\_\_\_  
\_\_\_\_\_  
\_\_\_\_\_

Inombolo yefeksi: \_\_\_\_\_

Inombolo yocingo: \_\_\_\_\_

Ikheli le-imeyili: \_\_\_\_\_

Isikhundla sokuthi isicelo senziwa njengobani uma senzela omunye umuntu:

**C. Imininingwane yomfakisicelo**

Lesi sahluko kufanele sigcwaliswe KUPHELA uma ingxenye yesithathu (ngaphandle komfakisicelo) ifaka isikhalazo sangaphakathi.

Amagama aphelele nesibongo: \_\_\_\_\_  
Inombolo kamazisi/ye-ID: \_\_\_\_\_

**D. Isinqumo isikhalazo sangaphakathi esifakelwa ukusiphikisa**

Faka umaka u-X ebhokisini elifanele lesinqumo isikhalazo sangaphakathi esifakelwa ukusiphikisa:	
	Ukunqaba isicelo sokufinyeleleka
	Isinqumo mayelana nezimali ezimisiwe ngokwesahluko sama-22 soMthetho
	Isinqumo mayelana nokwelulwa kwesikhathi isicelo okufanele sisetshenzwe ngaso ngokwesahluko sama-26(1) soMthetho.
	Isinqumo ngokwesahluko sama-29(3) soMthetho sokunqaba ukufinyeleleka ngohlobo olucelwe ngumfakaisicelo
	Isinqumo sokuvuma isicelo sokufinyeleleka

**E. Izizathu zokukhalaza**

Uma isikhala osinikiwe sisincane, sicela uqhubeke ekhasini eliseceleni bese ulinamathisela kuleli fomu. Ufanele usayinde onke amakhasi angeziwe.

Shono izizathu ukukhalaza kwangaphakathi okususelwa kuzo.

Shono nanoma yiluphi olunye ulwazi olungafaneleka ekucutshungulweni kwesikhalazo:

**F. Isaziso ngesinqumo sokukhalaza**

Uzokwaziswa ngokubhaliwe phansi ngesinqumo sokukhalaza kwakho kwangaphakathi. Uma ufisa ukwaziswa ngenye indlela, sicela uyisho leyo ndlela futhi uhlinzeke ngemininingwane evumela ukuhambisana nesicelo sakho.

Shono indlela: .....  
Imininingwane yendlela: .....

Isayindwe e-/o- ..... ngalolu suku lomhla zi-.....ku-..... ngonyaka we-20.....

\_\_\_\_\_  
ISIGINESHA YOMFAKISICELO

**LENGXENYE ISETSHENZISWA NGUMNYANGO:**

**ISAZISO NGESIKHALAZO SANGAPHAKATHI**

Isikhalazo sitholwe mhla zi- .....(usuku) ngu-.....  
(Ngokwe (shono isikhundla ngokomsebenzi, igama nesibongo soMgcinilwazi/sikaSekela-Mgcinilwazi).

Isikhalazo sabe siphelkezelwa izizathu ngesinqumo soMgcinilwazi/uSekela-Mgcinilwazi kanye, lapho ikhona, imininingwane yengxenye yesithathu irekhodi elimayelana nayo, esifakwe nguMgcinilwazi/uSekela-Mgcinilwazi mhla zi- (usuku) kusiphathimandla esifanele.

**UMPHUMELA WOKUKHALAZA:**

**ISINQUMO SOMGCINILWAZI/SIKASEKELA-MGCINILWAZI ESIQINISEKISIWE/ISINQUMO ESISHA ESIKHISHIWE.**

**ISINQUMO ESISHA:**

.....  
**ISIPHATHIMANDLA ESIFANELE**

.....  
**USUKU**

**SAMUKELWE NGUMGCINILWAZI/USEKELA-MGCINILWAZI SIVELA KUSIPHATHIMANDLA ESIFANELE (usuku):**

.....